



# 214 E KANAWHA AVENUE

Incredibly Charming 1940's Home. Loaded with original character and modern updates: original hardwood floors through-out, leaded glass widows, gas log fireplace, spacious & bright rooms, eat in kitchen w/gas range, 1st floor half bath, large owners bedroom, 2 nice sized bedrooms, screened porch, brick paver patio, large .22 acre lot, detached 2 car garage and much more. Located on a quiet street and a short distance to all Clintonville/ Beechwood/ Worthington destinations.

WILLIAM ROBBINS  
GLEDHILL ROBBINS & TALIS GROUP  
OF HER REALTORS  
614.208.8785 | [WILLIAM.ROBBINS@HERREALTORS.COM](mailto:WILLIAM.ROBBINS@HERREALTORS.COM)  
[WWW.FACEBOOK.COM/WILLIAMROBBINSREALTOR](http://WWW.FACEBOOK.COM/WILLIAMROBBINSREALTOR)  
[WWW.GRT-GROUP.COM](http://WWW.GRT-GROUP.COM)



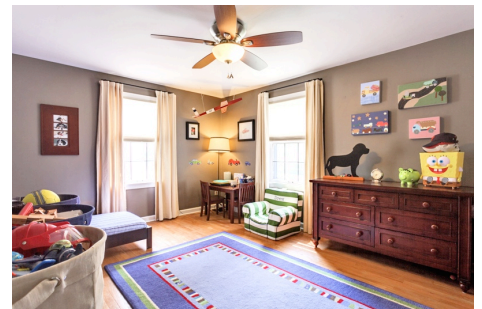
# FOR SALE

214 E KANAWHA AVENUE  
COLUMBUS, OH 43214

## FEATURES:

- 2 story
- 3 bedrooms
- 1 full bath
- 1 half bath
- 1410 square feet
- Hardwood floors through-out
- Leaded glass windows
- Living room
- Dining room
- 1 gas log fireplace
- Eat in kitchen
- Dishwasher
- Refrigerator
- Gas range
- Screened porch
- Patio
- Fenced yard
- 2 car detached garage
- Full basement
- Lower level laundry
- Forced air/ electric heat
- Central air conditioning
- Vinyl siding
- Lot size: 50 x 192
- New furnace & AC in 2011
- Driveway replaced in 2012

- Built in 1940
- Subdivision: Sharon Heights
- Columbus Schools
- Franklin County
- Annual Taxes: \$2997



For up-to-date pricing, more details and photos:

[WWW.GRT-GROUP.COM](http://WWW.GRT-GROUP.COM)